



(Translation)

No. 51/2016/053

October 14, 2016

Subject: Restructure of the Company's Subsidiaries

To: The President,
The Stock Exchange of Thailand

Enclosure: Subsidiaries' Structure

Central Pattana Public Company Limited ("the Company") has restructured two subsidiaries of the Company on October 12, 2016. The objective is to enhance the flexibility and efficiency of internal management. Details are as follows:

1. To register the dissolution of Central Realty Services Co., Ltd. ("CRS"), the subsidiary that the Company directly holds 99.99% of shares, with the registered capital of 1,000,000 Baht (one million Baht), the current status is on liquidation process.
2. To register the increase of capital of Central Pattana Realty Co., Ltd. ("CPR") (the former name is Langsuan Realty Co., Ltd.), the subsidiary that the Company directly holds 99.99% of shares, this registration will be made for support the transfer of CRS's assets and liabilities. After the capital increase registration process, the registered capital of CPR will increase from 1,000,000,000 Baht (one billion Baht) to 1,003,658,000 Baht (one billion and three million six hundred and fifty-eight thousand Baht) and the Company still holds the proportion of 99.99% of shares in CPR.

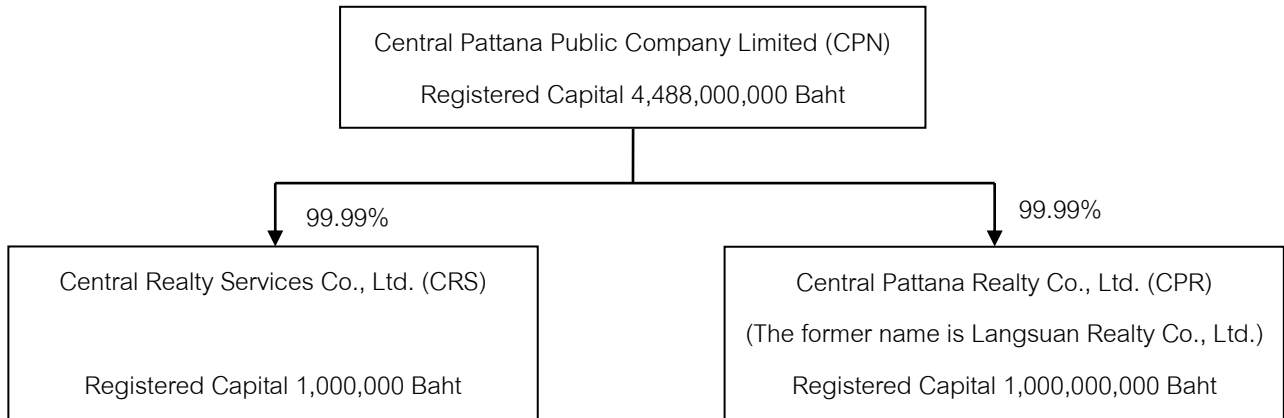
Please be informed accordingly.

Sincerely,

- Ampawee Chompoopongkasem-
(Ms. Ampawee Chompoopongkasem)
Company Secretary

Subsidiaries' Structure

(1) Before restructuring



(2) After restructuring and liquidation

